



REBUILDING DPSCD



New Southwest PK – 8 School

APR
02

Western High School

1500 Scotten St. Detroit, MI 48209

5:30 PM - 6:30 PM

FACILITY MASTER PLAN
**ENGAGEMENT
MEETING**

DETROITK12.ORG/FMP



Today's Agenda

- **Welcome and Introductions**
- **Facility Master Plan Overview**
- **Program Review**
- **What We Heard: Previous Engagement Session Recap**
- **Design Activity**
- **Questions & Answers**



Q & A Process



FACILITY MASTER PLAN *Meeting*
QUESTION CARD



FACILITY MASTER PLAN *Meeting*
FEEDBACK CARD

Meet the Capital Projects Team



Machion Jackson
Deputy Superintendent of
Operations



Cleveland "Mike" Simmons
Executive Director of
Facilities & Capital Projects



Kidest Albaari
Deputy Executive Director of Capital
Projects



Chatoris Jones
Senior Director of Operations

Meet Your Owner's Representatives



Nicole Blocker
Plante Moran Realpoint
Program Manager

Ivan Petrovic
Plante Moran Realpoint
Project Manager

Jon DePew
Plante Moran Realpoint
Project Manager

Kim Dokes
Dokes Design
Architecture LLC
Project Manager

Salam Rida
Dokes Design
Architecture LLC
Project Manager

Tarolyn Buckles
Onyx Enterprises
Project Manager



Meet Your Design Team



Sam Moschelli
AIA, NCARB, NOMA
Program Executive
Fanning Howey



Kirk Welsh
AIA NCARB NOMA
Project Manager
PURE Architects



Steve Herr
AIA
Director of Design
Fanning Howey



Carla Remenschneider
IIDA, RID
Director of Interior Design
Fanning Howey

Meet Your Design Team



Morgan Hemmings
NCIDQ
Project Interior Designer
Fanning Howey



Megan Towe
Associate Creative Director
Zoyes Design



Chase Holloway
AIA
Project Architect
Fanning Howey



Ernso Brown
Landscape Designer
Fanning Howey

Facility Master Plan (FMP) Implementation Strategy Overview



Series 1 Managed by PMR	Series 2 Managed by PMR	Series 3 Management Capital Team/PMR	Series 4 Management Capital Team	Series 5 Management PMR	Series 6 Management PMR
8 Schools Impacted	10 Schools Impacted	38 Schools Impacted	5 Schools Impacted	19 Schools Impacted	50 Schools Impacted
SCOPE: New Buildings, Additions, Program Moves & Demolitions	SCOPE: Program Moves, Building Reactivations & Alternative Campus	SCOPE: Pre-K Expansion & Pre-K Centers	SCOPE: Demolitions	SCOPE: New Buildings, Reactivations, Addition, & Major Renovations	SCOPE: Building Renovations
\$202,000,000 INVESTMENT TOTAL	\$12,350,000 INVESTMENT TOTAL	\$13,634,959 INVESTMENT TOTAL	\$11,000,000 INVESTMENT TOTAL	\$306,667,733 INVESTMENT TOTAL	\$153,939,173 INVESTMENT TOTAL
PROJECT START: Summer 2022	PROJECT START: Summer 2022	PROJECT START: Summer 2022	PROJECT START: Summer 2022	PROJECT START: Summer 2023	PROJECT START: Fall 2024

Series 5: New Build Overview

Opening: Fall 2027

Phase: Design

Budget: \$48 Million

Program Overview:

- Rebuild on Existing Site
- 75,000 sq.ft. two-story
PK – 8
- 500 Student Capacity

- Classrooms
- Science Lab
- Specialty Rooms
- Collaboration Spaces
- Gymnasium
- Student Courtyards
- Outdoor Play Spaces

High-Level Project Timeline

- Old Building Demolition – **February 2024**
- Procure Architect/Engineering Firm – **November 2023**
 - Architect/Engineering On-boarding – **December 2023**
- Pre-Planning – **January 2024**
- **Planned Engagement Dates – August 2024 – Spring 2025**
 - *Community*
 - *Detailed Programming Sessions*
 - *School Identity Development*
- Scheduled Construction Completion – **Summer 2027**
- New Building Move-In – **Fall 2027**

REBUILDING DPSCD



What We Heard

Sc

Fall Engagement Session





Station 2: Wellness and Joy (Graphics)

Estación 2: Bienestar y alegría (Gráficos)

FANNING
HOWEY



QUESTION

Which of these images of interior graphics do you find most joyful? Why? Which are not joyful to you? Why?

Pregunta: ¿Cuál de estas imágenes de gráficos de interior le parece más alegre? ¿Por qué? ¿Cuáles no le resultan alegres? ¿Por qué?



INSTRUCTIONS

Please place green dots next to images that you consider most joyful.

Please place red dots underneath spaces that you do not consider joyful.

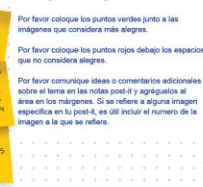
Please communicate additional thoughts or comments on the subject on post-its and add to the area on the margins. If you are referring to a particular image in your post-it, including the number of the image on the post-it is helpful.

Por favor coloque los puntos verdes junto a las imágenes que considere más alegres.

Por favor coloque los puntos rojos debajo los espacios que no considere alegres.

Por favor comunique ideas o comentarios adicionales sobre el tema en las notas post-it y agréguelas al área en los márgenes. Si se refiere a alguna imagen específica en la post-it, es útil incluir el número de la imagen a la que se refiere.

Inspirational quotes



Station 4: Building Exterior and Additional Thoughts

Estación 4: Exterior del Edificio y Pensamientos Adicionales

FANNING
HOWEY



QUESTION

Which of these types of building exteriors do you feel would be most appropriate for the community? Why?

Pregunta: ¿Cuáles de estos tipos de exteriores de edificios cree que sería el más apropiados para la comunidad? ¿Por qué?



1. Bold Colorful Exterior
1. Exterior colorido/variado



2. Contemporary Brick Exterior
2. Exterior de ladrillo contemporáneo



3. Patterned/Textured Exterior
3. Exterior con patrones/texturas

INSTRUCTIONS

Please place green dots next to exterior images you feel are appropriate, red dots next to ones you feel like are not.

Please communicate additional thoughts or comments on the subject on post-its and add to the area on the margins. If you are referring to a particular image in your post-it, including the number of the image on the post-it is helpful.

Por favor coloque los puntos verdes junto a las imágenes de exteriores que sienta apropiados, puntos rojos al lado de los que sienta que no son apropiados.

Por favor comunique ideas o comentarios adicionales sobre el tema en las notas post-it y agréguelas al área en los márgenes blancos. Si se refiere a alguna imagen específica en la post-it, es útil incluir el número de la imagen a la que se refiere.



4. Multicolor Exterior
4. Exterior multicolor



5. Mixed Shapes Exterior
5. Exterior con formas mixtas



6. Organic Shape Exterior
6. Exterior con formas orgánicas



7. Simple Shape Exterior
7. Exterior de forma simple



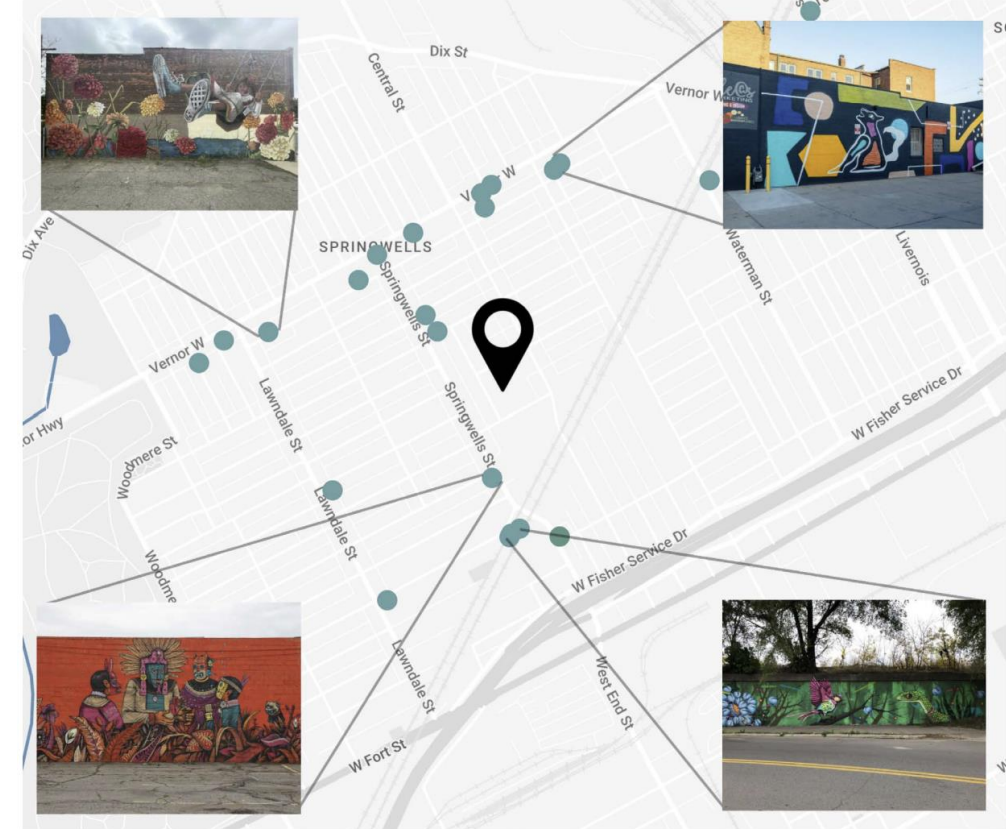
8. Contemporary-Traditional
8. Exterior contemporáneo-tradicional



9. Residential-Scale Exterior
9. Exterior a escala residencial

Too plain

Unappealing



REBUILDING DPSCD

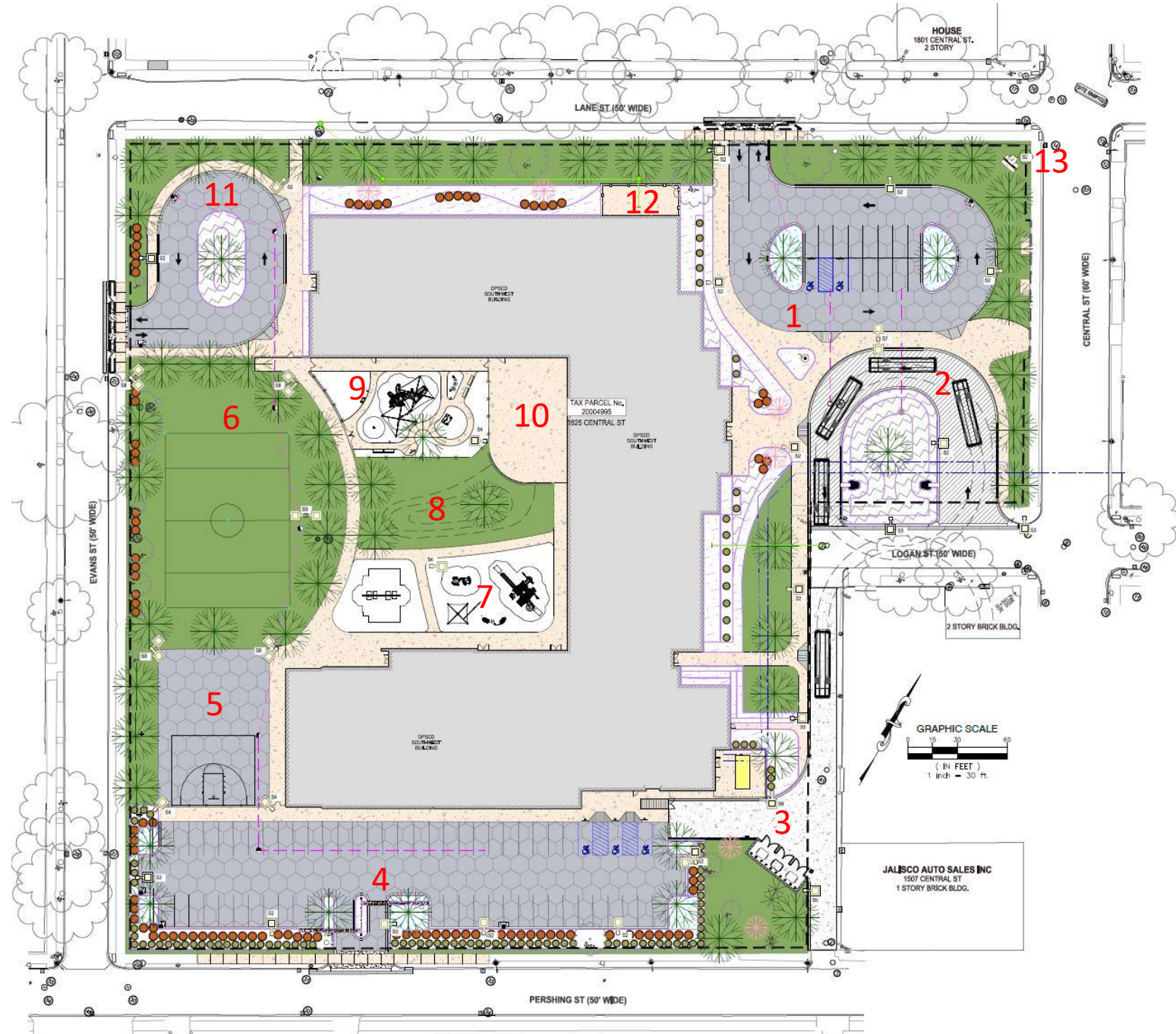


Collaborative Outcomes

Sc

Site

1. Parent Pick-up and Drop-off
2. Bus Pick-up and Drop-off
3. Service and Delivery Drive
4. Employee Parking
5. Basketball and Pavement Games
6. Youth Soccer Field
7. 4-8 Playground
8. Hill play
9. Pre-K playground
10. Instructional Media Center (IMC) Patio
11. Pre-K Pick-up and Drop-off
12. Art Patio
13. School Marquee Sign



Entry

Please Note: Renderings and materials are conceptual design samples of the new building. Final designs are subject to change.

- Inviting to both pedestrian focused NE and NW corners
- Open lawn spaces for student use



Site

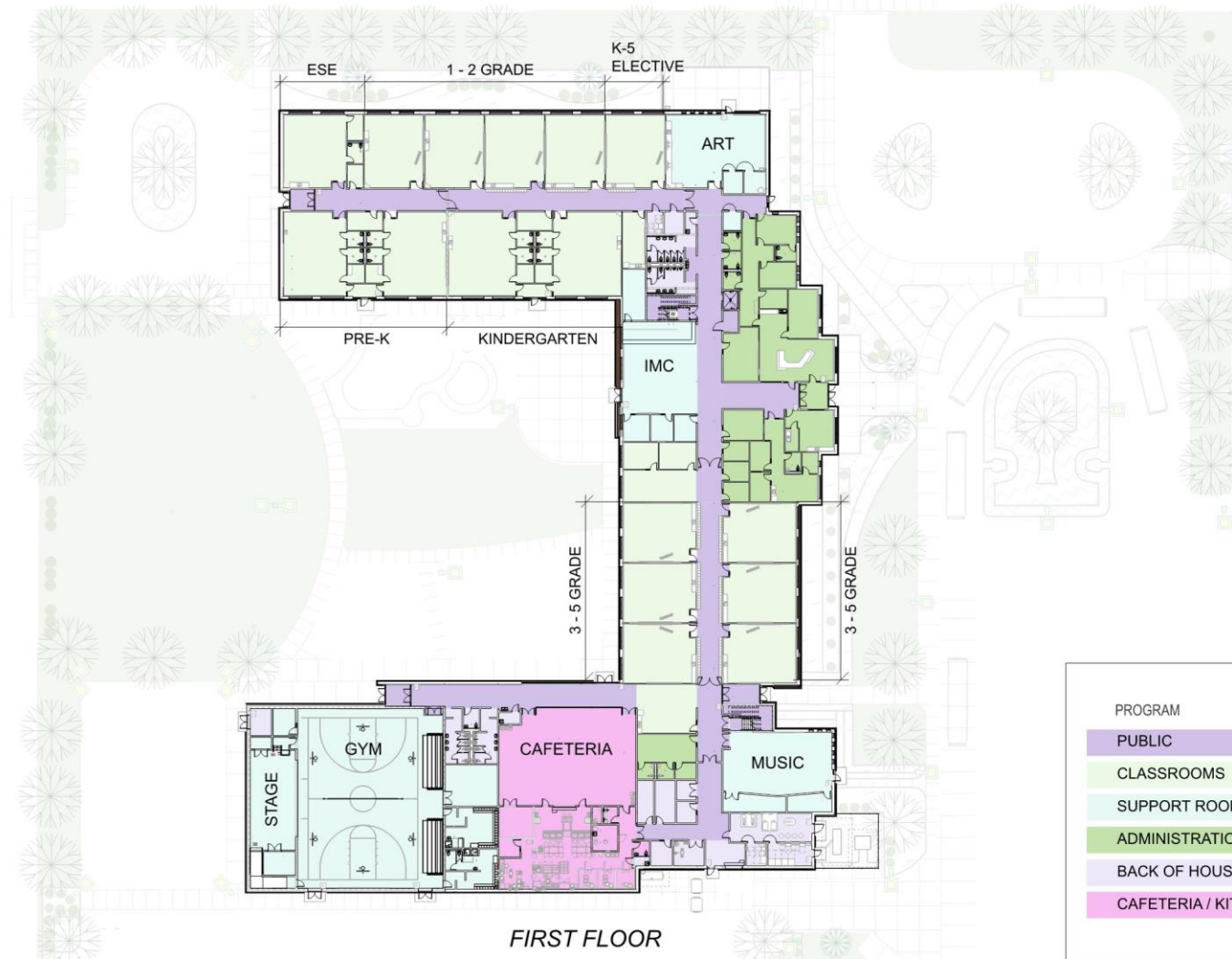
Please Note: Renderings and materials are conceptual design samples of the new building. Final designs are subject to change.

- Inviting to both pedestrian focused NE and NW corners
- Open lawn spaces for student use



Space Program / Floorplan

Please Note: Renderings and materials are conceptual design samples of the new building. Final designs are subject to change.



PROGRAM	SF
PUBLIC	11,574
CLASSROOMS	29,448
SUPPORT ROOMS	13,764
ADMINISTRATION	5,440
BACK OF HOUSE / RESTROOMS	3,943
CAFETERIA / KITCHEN	4,953
TOTAL PROGRAM SF	69,122

Space Program / Floorplan

Please Note: Renderings and materials are conceptual design samples of the new building. Final designs are subject to change.

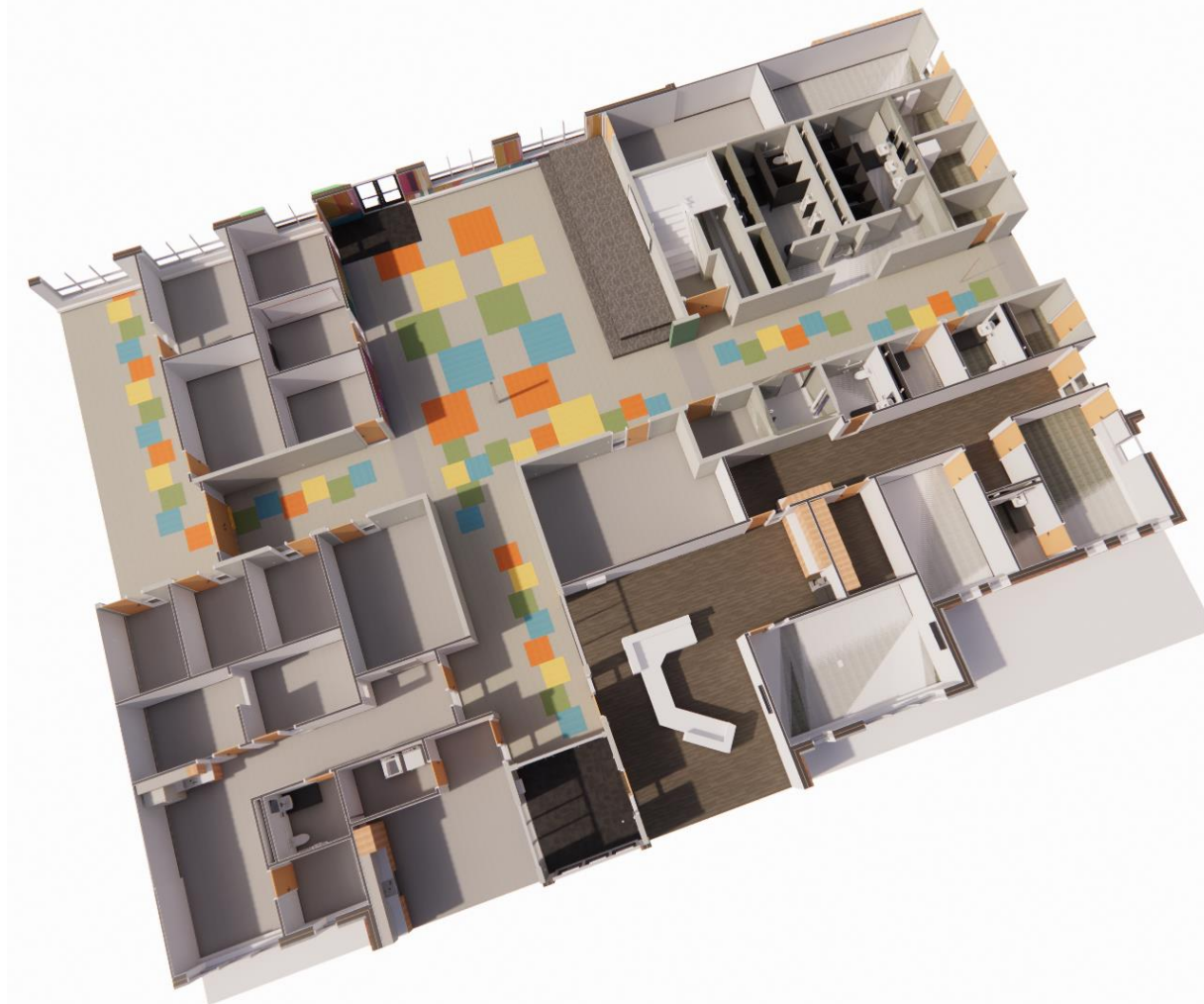


SECOND FLOOR

PROGRAM	SF
PUBLIC	11,574
CLASSROOMS	29,448
SUPPORT ROOMS	13,764
ADMINISTRATION	5,440
BACK OF HOUSE / RESTROOMS	3,943
CAFETERIA / KITCHEN	4,953
TOTAL PROGRAM SF	69,122

Translating Themes

Please Note: Renderings and materials are conceptual design samples of the new building. Final designs are subject to change.



Instructional Media Center

Please Note: Renderings and materials are conceptual design samples of the new building. Final designs are subject to change.

- At the heart of the school just off the main entry
- Open plan inviting students during the day and the public for special events and functions
- Hub for learning and community
- Provides a space for individual and group student work, including reading and project based learning



Music

Please Note: Renderings and materials are conceptual design samples of the new building. Final designs are subject to change.

- Lively space encouraging excitement and creativity
- Colorful panels are dual purpose creating visual interest and absorbing sound
- Space reflects the joy and vibrance of celebration



Typical Classroom

Please Note: Renderings and materials are conceptual design samples of the new building. Final designs are subject to change.

- Wayfinding colors help orient students and guests
- Muted colors to ease eye strain and draw attention to teaching walls
- Cabinetry to store classroom supplies



REBUILDING DPSCD



BY BRICK

Sc

Developing School Identity

Role of School Identity



The School Identity is more than a logo, a color, or a sign on the door. It's how you are recognized, experienced and known. **It shapes people's experience.**

Your brand has the power to tell a story and create a connection.

And create a **sense of community and pride** among students and staff.

Determining School Identity

We need your input!

We will determine brand and identity through your feedback on the following **exercises**.

You will also receive a **survey** by email asking questions that will help determine the school name and mascot.

REBUILDING DPSCD



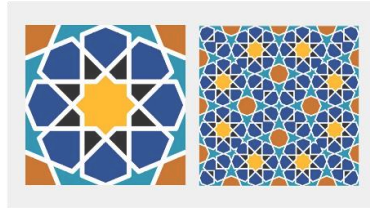
BY BRICK

Graphic Style

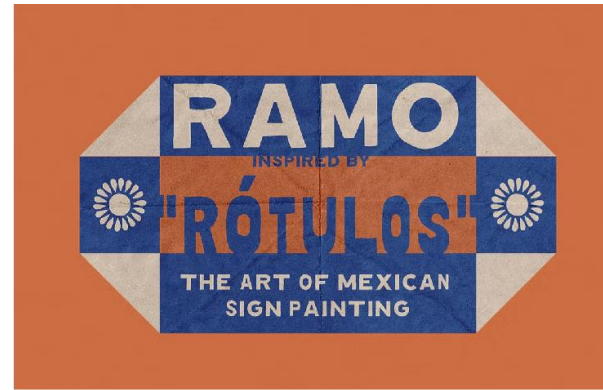
What should the school graphics, artwork, and brand look like?

Please provide your feedback with dots
and comments on the boards.

TRADITIONAL
ARTFORMS



ARABIC
PATTERNS



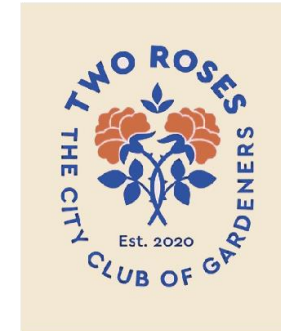
MEXICAN
RÓTULOS AND
TALAVERA



PAPEL
PICADO



KENTE CLOTH
PATTERNS



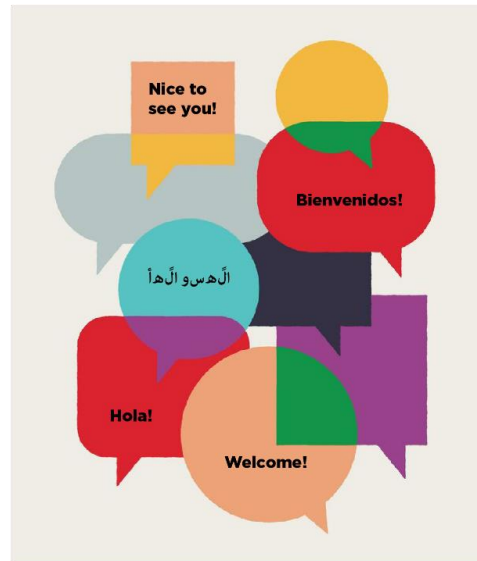
HAND DRAWN
STYLE



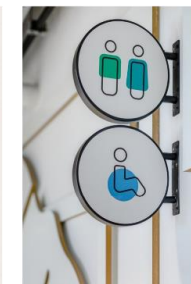
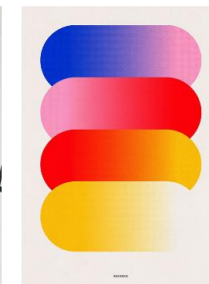
MULTICULTURALISM THROUGH
COLOR AND LANGUAGE



OPENNESS THROUGH
TRANSPARENCY



MULTILINGUAL



COMMUNITY
PRIDE &
BELONGING

TRANSFORMATIVE
SPACES

REBUILDING DPSCD



School Colors

School Colors Exercise

What should the school colors be?

**Please provide your feedback with dots and
comments on the boards.**

Option 1

S

S

S

Option 2



A stylized, bold letter 'S' is centered on a light blue background. The letter is dark teal with a thick, light cream-colored shadow offset to its left and bottom, giving it a three-dimensional appearance.A stylized, bold letter 'S' is centered on a dark teal background. The letter is light cream with a thick, dark teal shadow offset to its left and bottom, giving it a three-dimensional appearance.A stylized, bold letter 'S' is centered on a light beige background. The letter is a burnt orange color with a thick, dark teal shadow offset to its left and bottom, giving it a three-dimensional appearance.

A large, stylized letter 'S' is centered on a dark blue background. The 'S' is composed of two overlapping shapes: a light blue 'S' and an orange 'S' that is slightly offset to the right and bottom, creating a 3D effect.A large, stylized letter 'S' is centered on a light blue background. The 'S' is composed of two overlapping shapes: an orange 'S' and a dark blue 'S' that is slightly offset to the right and bottom, creating a 3D effect.A large, stylized letter 'S' is centered on an orange background. The 'S' is composed of two overlapping shapes: a dark blue 'S' and a light blue 'S' that is slightly offset to the right and bottom, creating a 3D effect.

Time for Q & A



FACILITY MASTER PLAN *Meeting*
QUESTION CARD



FACILITY MASTER PLAN *Meeting*
FEEDBACK CARD



**Thank You for Joining Today
Stay Connected!**



OFFICE OF OPERATIONS
Division of Capital Projects & Facilities

Appendix

REBUILDING DPSCD



FACILITY MASTER PLAN
**UPDATE
MEETING**

DETROITK12.ORG/FMP

