

1



### Apply

Search our listings of available positions at [careers.detroitk12.org](https://careers.detroitk12.org) If you are interested in joining our team of dedicated staff be sure to apply today and upload a current resume to be shared with our Hiring Managers.

2



### Interview

Interview with our Hiring managers via phone, video, or in-person. Interviews will be conducted with candidates who are deemed eligible for the position based on their application materials.

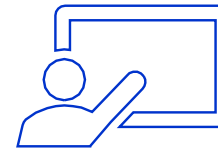
3



### Offer

Check your email for a conditional offer. The offer email will come from the Human Resources team and will include information on next steps. Offers must be responded to within 48 hours.

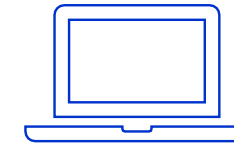
4



### Pre-Hire Orientation

Sign up to attend a pre-hire orientation session. At this session, you will learn more about the District's Strategic Plan and submit all necessary pre-hire documentation.

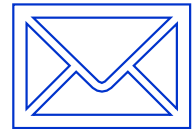
5



### E-Onboarding

Complete Electronic Onboarding by signing into the online platform and completing necessary new-hire documents. You will also sign up for and complete LiveScan fingerprint testing and a Tuberculosis (TB) screening.

6



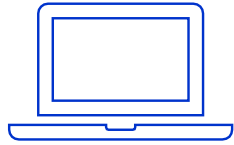
### Assignment Letter

Check your email for your Assignment Letter. This is sent prior to your first day of work. Your Assignment Letter verifies your completion of e-onboarding and passing result of fingerprinting and TB tests.

[detroitk12.org](https://detroitk12.org) | 313.873.6897 | [recruitment@detroitk12.org](mailto:recruitment@detroitk12.org)

Students Rise. We All Rise.

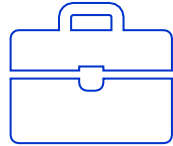
7



### New Employee Hub

Access the District's New Employee Hub Site to review key resources needed prior to your first day of work and throughout your first month as an employee at DPSCD

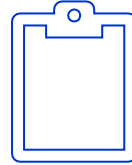
8



### First day of work

Report to your work location for your first day of work at DPSCD. Your first day of work will be about 2 weeks after your pre-hire orientation session.

9



### First week reflection

Complete the first week onboarding survey. This will allow you to reflect on your first week and your onboarding experience up until this point. It will also help to guide the onboarding you receive moving forward.

10



### Onboarding Plan

Follow your onboarding plan throughout your first year of employment with DPSCD. Your onboarding plan will be tailored to your role and allow for your manager and team to provide items, information, and experiences to be successful at DPSCD.

11



### First year reflection

Reflect on your first year of employment with your manager. At the end of your first year, you will have the opportunity to provide feedback and discuss opportunities for development to continue to thrive in your role at DPSCD.

[detroitk12.org](http://detroitk12.org) | 313.873.6897 | [recruitment@detroitk12.org](mailto:recruitment@detroitk12.org)

Students Rise. We All Rise.